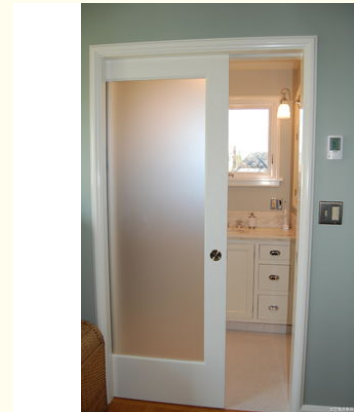


Frosted Clear Acid Etched Glass For Home Hotel Bathroom Doors

Our Product Introduction

Basic Information

- Place of Origin: CHINA
- Brand Name: RISE
- Certification: CE,ISO, SGS
- Model Number: Frosting / Acid-Etched Glass
- Minimum Order Quantity: 1 container
- Price: USD1-99/
- Packaging Details: wooden case
- Delivery Time: 7 days
- Payment Terms: T/T, L/C, D/A, D/P, Western Union, MoneyGram
- Supply Ability: 500 Tons Per Day



Product Specification

- Function: Acid Etched Glass
- Shape: Flat
- Color: Clear
- Size: Custom Sizes
- Usage: Building Materials, Commercial Glass Doors, Door, Decorative Glass, wall Ect.
- Packing: Wooden Cases
- Highlight: 19mm clear acid etched glass, clear acid etched glass 19mm, 15mm clear etched glass



More Images



for more products please visit us on rise-glass.com

Product Description

Bathroom Block Frosted Glass for Home/Hotel Doors

Basic Info.

Model NO.	Frosted /Acid-Etched Glass/Ultra clear anti-fog mirror
Nominal Thickness	2mm
Surface State	Floats Law Glass
Grade	Excellent Grade
Forming	Float Process
Workmanship	Molding machinery
Color	Clear
Usage	Furniture, Door, Building, Window
Delivery Time	15 Days
Certificate	CE,ISO, SGS
Payment	T/T
Size	Customized
Transport Package	Wooden Case
Specification	6500*3300
Trademark	Rise
Origin	China
HS Code	7005300000
Production Capacity	20000 Square Meter/Day

Product Description

Company

Profile

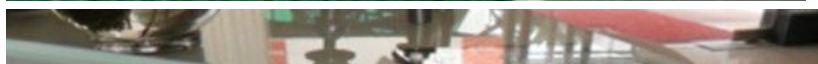
we are well-known glass processing manufacturers producing different kinds of customized building glass, including tempered glass, laminated glass, insulated glass, decorative glass, etc. We offer one-stop services. Welcome to customizing your design!

Product Description

Color	upon to request
Usage	Furniture, Door, Building, Window
thickness	2mm,4mm,5mm,6mm,8mm,10mm,12mm,15mm,19mm
size	upon to request
HS Code	7005300000
Brand	Rise

Acid-etched frosted glass: a glass product that undergoes acid etching to create a finely textured, matte surface. It strikes the perfect balance between privacy and light transmission, making it ideal for shower enclosures, decorative partitions, and architectural applications. The acid-etched finish lends a sleek, contemporary aesthetic, adding a touch of sophistication to any space. With its versatility, stylish appearance, and ability to diffuse light, acid-etched frosted glass is a popular choice for creating elegant and functional environments that prioritize both aesthetics and privacy.

Detailed Photos





Packaging &
Shipping

Laminated Tempered Glass 6.38/10.38/16/12 /13.52 mm Low Iron Polished Edge Tempered Laminated Glass

After Sales Service

1. Provide you with timely, professional, and efficient services in accordance with standardized service processes;
2. 7 * 24-hour hotline telephone online service;
3. Quality issues that belong to the production process will be unconditionally resolved;

FAQ

Q: What is the MOQ?A: Generally, there is no MOQ for processed glass, but if you want to receive the best price, the bigger quantity, the better price.

Q: Can I have a small sample to verify the quality?A: Sure, we welcome samples to be tested and checked for quality.

Q: Can I visit your factory?A: Yes, we welcome all of the customers to visit our factory when you have real requirements, we will take you to each of our production lines, and discuss orders in our office.

Q: Do you offer a guarantee for the products?A: Yes, generally, we offer 5 years warranty for processing glass based on your normal uses, we advise you use it in the right way can keep your product's service life a long time (more than 5 years).

Q: How do you control the quality of your products?A: We have standard management in the factory based on the ISO system, and train our staff regularly, our production department will choose high-quality materials for glass strictly, for finished excellent products. And we have QC for each process, once find any problem, we will replace the glass, to make sure every piece of glass go to the customer's warehouse is in good condition.



15215322121



leon@qdcrglass.com



rise-glass.com

Tianzhi Building, No. 63 Beijing Road, Huangdao District, Qingdao City, Shandong Province